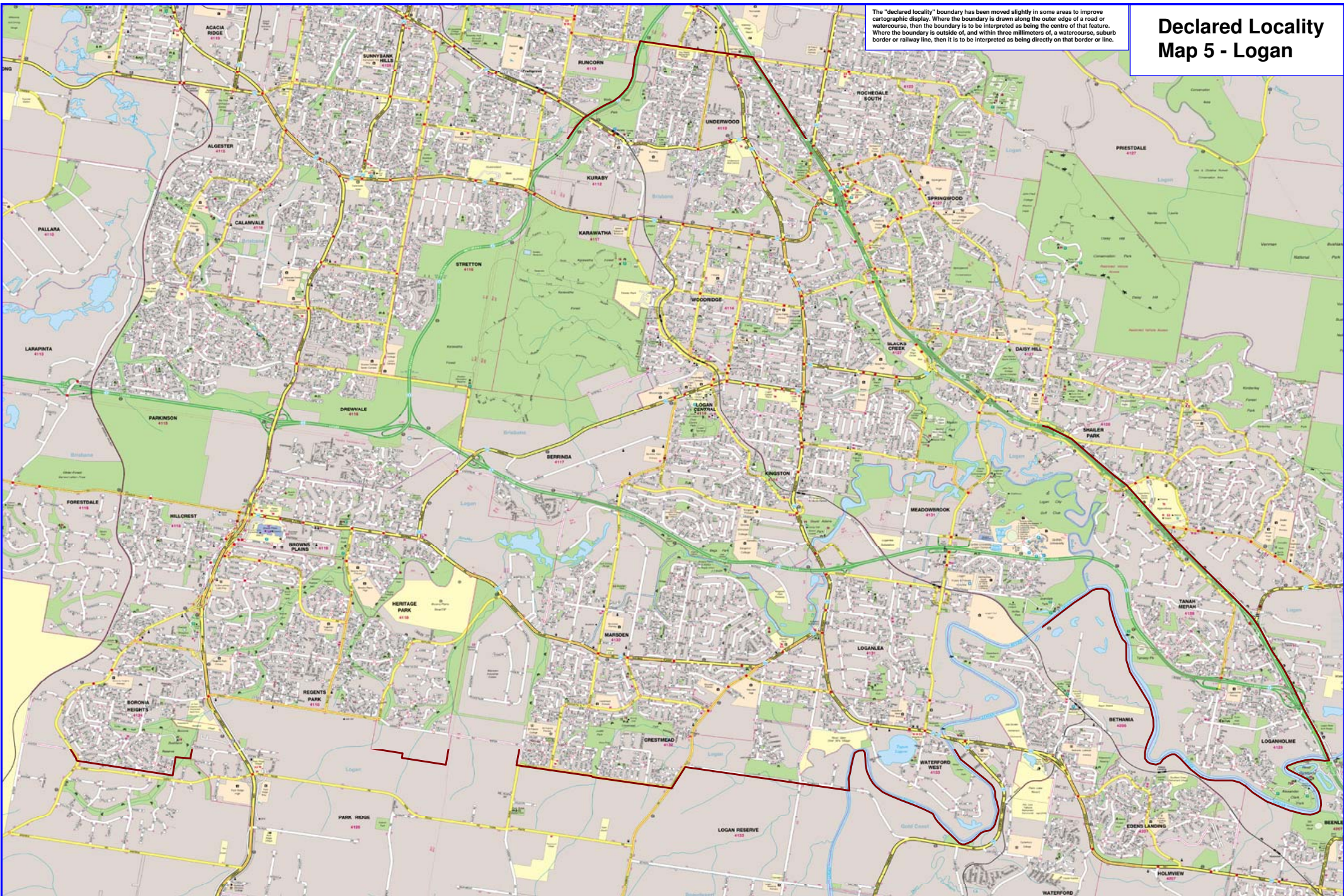


Declared Locality Map 5 - Logan

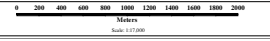
The "declared locality" boundary has been moved slightly in some areas to improve cartographic display. Where the boundary is drawn along the outer edge of a road or watercourse, then the boundary is to be interpreted as being the centre of that feature. Where the boundary is outside of, and within three millimeters of, a watercourse, suburb border or railway line, then it is to be interpreted as being directly on that border or line.



FOR INTERNAL USE ONLY

DATA SOURCES:
 2007 Map Data is subject to copyright and has been reproduced with the permission of Servotek. Servotek is a registered Trade Mark of Servotek Corporation Limited.
 Data supplied by Servotek January 2008.
 Declared locality boundaries were supplied by 5557 West White, by email on 03/08/07/2008.

MAP TITLE: Declared Locality Map 5 Logan	REF: 219/2008
OPERATION: Nil	QA: D.G.
COMPILED BY: T.B. - Geographic Information Services	DATE: 028/09/2008
FILENAME: Declared Locality Map 5 Logan AOL web	



LEGEND:

 Declared Locality Boundary

