

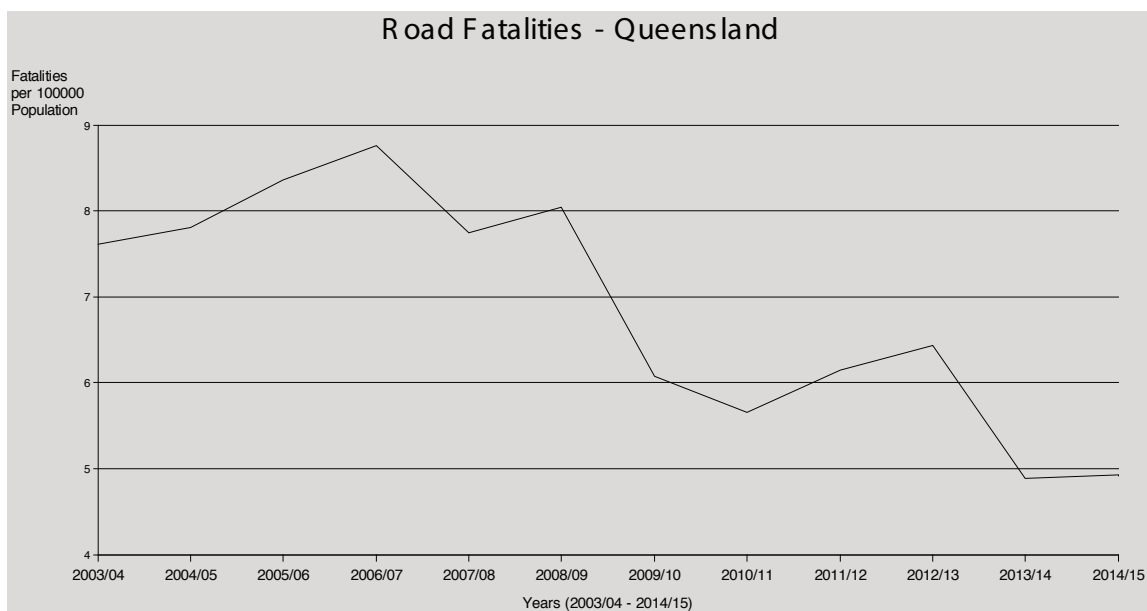


## Traffic

This section contains information relating to traffic crashes, speed, red light camera notices and random breath tests within Queensland.

All data included in this section were provided by the Road Policing Command, Queensland Police Service and are current as at 30 June 2015.

Data relating to traffic crashes and injuries other than fatalities were not available at the time of publication.



Queensland's road fatality rate for the 2014/15 financial year was 5 fatalities per 100,000 persons. Queensland recorded a 2% increase in the rate per 100,000 persons when compared with the previous year.

## Traffic:

### Road Fatalities – Number of Road Fatalities# – 2013/14 and 2014/15

Region/District	Number Reported			Number Reported per 100,000 Persons*		
	2013/14	2014/15	Percentage Change	2013/14	2014/15	Percentage Change
<b>Brisbane Region</b>	<b>30</b>	<b>24</b>	<b>-20%</b>	<b>2</b>	<b>2</b>	<b>-22%</b>
North Brisbane	11	13	18%	2	2	16%
South Brisbane	19	11	-42%	2	1	-43%
<b>Central Region</b>	<b>69</b>	<b>79</b>	<b>14%</b>	<b>7</b>	<b>8</b>	<b>12%</b>
Capricornia	18	21	17%	8	9	14%
Mackay	18	17	-6%	10	9	-8%
Sunshine Coast	15	18	20%	5	5	18%
Wide Bay Burnett	18	23	28%	7	9	26%
<b>Northern Region</b>	<b>34</b>	<b>44</b>	<b>29%</b>	<b>6</b>	<b>8</b>	<b>27%</b>
Townsville	16	4	-75%	7	2	-76%
Mount Isa	3	5	67%	9	14	64%
Far North	15	35	133%	5	13	130%
<b>South Eastern Region</b>	<b>30</b>	<b>23</b>	<b>-23%</b>	<b>3</b>	<b>3</b>	<b>-25%</b>
Gold Coast	18	11	-39%	3	2	-40%
Logan	12	12	0%	4	4	-2%
<b>Southern Region</b>	<b>66</b>	<b>64</b>	<b>-3%</b>	<b>8</b>	<b>8</b>	<b>-5%</b>
Darling Downs	29	17	-41%	12	7	-42%
Ipswich	8	7	-13%	4	3	-15%
Moreton	8	19	138%	3	8	133%
South West	21	21	0%	18	18	-1%
<b>Queensland</b>	<b>229</b>	<b>234</b>	<b>2%</b>	<b>5</b>	<b>5</b>	<b>1%</b>

\*Although offences per 100,000 persons have been rounded to the nearest whole number, the actual rate was used to calculate the percentage change between the two periods. Therefore, although the change values are correct, they may not appear so, particularly in small volume offence categories.

#Casualty data obtained from WebCrash 2.3 database. Population data by Region and District sourced from Statistical Services and extrapolated to December 2013 and 2014 for calculating fatality rates. Population figure for Queensland total fatality rate was sourced from ABS Catalogue 3101.0 (December 2014 issue).

# Traffic:

## Drink Driving Offences – Number of Drink Driving Offences – 2014/15

Region/District	0.15 and over (includes Under the Influence of Drugs)	0.10 & under 0.15	0.05 & under 0.10	Below 0.05	Fail to Provide Specimen of Breath or Blood	Total
<b>Brisbane Region</b>	<b>1024</b>	<b>1114</b>	<b>1975</b>	<b>301</b>	<b>118</b>	<b>4532</b>
North Brisbane	470	570	1001	136	55	2232
South Brisbane	554	544	974	165	63	2300
<b>Central Region</b>	<b>1334</b>	<b>1305</b>	<b>2354</b>	<b>324</b>	<b>140</b>	<b>5457</b>
Capricornia	330	380	585	108	37	1440
Mackay	294	265	477	73	24	1133
Sunshine Coast	411	374	792	72	49	1698
Wide Bay Burnett	299	286	500	71	30	1186
<b>Northern Region</b>	<b>1108</b>	<b>950</b>	<b>1511</b>	<b>269</b>	<b>104</b>	<b>3942</b>
Townsville	532	519	874	143	52	2120
Mount Isa	195	121	129	31	13	489
Far North	381	310	508	95	39	1333
<b>South Eastern Region</b>	<b>869</b>	<b>1024</b>	<b>1771</b>	<b>203</b>	<b>89</b>	<b>3956</b>
Gold Coast	591	677	1149	119	55	2591
Logan	278	347	622	84	34	1365
<b>Southern Region</b>	<b>916</b>	<b>979</b>	<b>1717</b>	<b>276</b>	<b>108</b>	<b>3996</b>
Darling Downs	267	278	507	94	23	1169
Ipswich	198	241	365	56	23	883
Moreton	226	270	494	65	34	1089
South West	225	190	351	61	28	855
<b>Queensland</b>	<b>5251</b>	<b>5372</b>	<b>9328</b>	<b>1373</b>	<b>559</b>	<b>21883</b>

## Traffic:

### Red Light Cameras – Number of Red Light Camera Offences – 2014/15<sup>^</sup>

Region	Number of Offences			Number of Offences per 1,000 vehicles monitored		
	2013/14	2014/15	Percentage Change	2013/14	2014/15	Percentage Change**
Brisbane Region	24400	19123	-22%	0.15	0.15	-5%
Central Region	4435	2887	-35%	0.16	0.14	-12%
Northern Region	3260	2873	-12%	0.17	0.15	-9%
South Eastern Region	4903	6753	38%	0.18	0.23	25%
Southern Region	1281	2199	72%	0.10	0.18	90%
<b>Queensland</b>	<b>38279</b>	<b>33835</b>	<b>-12%</b>	<b>0.16</b>	<b>0.16</b>	<b>3%</b>

### Mobile Speed Cameras – Number of Mobile Speed Camera Offences – 2014/15

Region	Number Offences			Number of Offences per Hour*		
	2013/14	2014/15	Percentage Change	2013/14	2014/15	Percentage Change**
Brisbane Region	302470	354046	17%	11.53	13.40	16%
Central Region	73068	84444	16%	3.49	3.78	8%
Northern Region	63474	99194	56%	3.40	4.96	46%
South Eastern Region	106538	154192	45%	8.14	11.03	36%
Southern Region	84668	120778	43%	5.34	6.59	23%
<b>Queensland</b>	<b>630218</b>	<b>812654</b>	<b>29%</b>	<b>6.65</b>	<b>8.04</b>	<b>21%</b>

### Fixed Speed Cameras – Number of Fixed Speed Camera Offences – 2014/15<sup>#</sup>

Region	Number Offences			Number of Offences per 1,000 vehicles monitored		
	2013/14	2014/15	Percentage Change	2013/14	2014/15	Percentage Change**
Brisbane Region	59064	64546	9%	1.11	1.12	1%
Central Region	10318	8776	-15%	0.46	0.56	21%
Northern Region	16980	18502	9%	1.70	1.76	3%
South Eastern Region	63211	86601	37%	1.29	1.85	44%
Southern Region	13928	7787	-44%	0.66	0.50	-24%
<b>Queensland</b>	<b>163501</b>	<b>186212</b>	<b>14%</b>	<b>1.05</b>	<b>1.27</b>	<b>21%</b>

Please Note:

- Data is extracted from camera databases within the Queensland Police Service (Traffic Camera Office). These systems are live databases and the reported statistics may vary on a daily basis.
  - Any data which is extracted less than six weeks from the end of a reporting period is considered preliminary.
  - Offences from road safety cameras do not necessarily result in the issuing of an infringement notice. Offences from cameras are adjudicated by an accredited Traffic Camera Office staff member. The adjudication process assesses whether there is sufficient evidence to meet legal requirements to issue an infringement notice. Differences observed between offences and notices issued will be the result of this adjudication process.
  - Vehicles Monitored relates to the number of vehicles the camera detects as passing the camera and is an automated process performed by the camera. Portable Mobile Speed Cameras are aimed at a specific vehicle and not all vehicles passing that location and therefore do not collect a total vehicles count.
- \*\* Although offences per 1,000 vehicles or per hour have been rounded to the nearest whole number, the actual number was used to calculate the percentage change between the two periods. Therefore, although the change values are correct, they may not appear so, particularly where numbers are low.
- <sup>^</sup> Figures include data for digital combined speed/red light cameras (red light offences only).
- \* Portable devices do not collect a vehicle count, so data for Mobile Speed Cameras (Overt, Covert & Portable) is represented in 'Offences Per Hour' rather than 'Offences Per 1,000 Vehicles'.
- <sup>#</sup> Figures include data for digital combined speed/red light cameras (speed offences only).

## Traffic:

### Number of Random Breath\* and Roadside Drug Tests Conducted^ – 2013/14

Region	Booze Bus	Other Stationary	Mobile	Crash/ Infringement	^Other	Total	Roadside Drug Tests	Positive Drug Results
Brisbane Region	23093	713910	145356	45836	1782	929977	-	270
Central Region	9160	729256	271922	43065	9329	1062732	-	307
Northern Region	18845	304748	121219	15291	3032	463135	-	346
South Eastern Region	9797	438325	137266	16066	5617	607071	-	681
Southern Region	767	516386	232987	28418	4608	783166	-	269
Other*	226	103575	12138	9292	3789	129020	-	-
<b>Queensland</b>	<b>61888</b>	<b>2806200</b>	<b>920888</b>	<b>157968</b>	<b>28157</b>	<b>3975101</b>	<b>23127</b>	<b>1873</b>

### Number of Random Breath\* and Roadside Drug Tests Conducted^ – 2014/15

Region	Booze Bus	Other Stationary	Mobile	Crash/ Infringement	^Other	Total	Roadside Drug Tests	Positive Drug Results
Brisbane Region	13808	593137	132067	28577	2161	769750	-	578
Central Region	2942	707274	256870	40099	10171	1017356	-	875
Northern Region	23783	281653	103382	18688	4950	432456	-	666
South Eastern Region	10863	428959	125840	19963	5744	591369	-	454
Southern Region	1022	496356	229089	26387	4576	757430	-	605
Other*	194	69438	10118	6880	2520	89150	-	-
<b>Queensland</b>	<b>52612</b>	<b>2576817</b>	<b>857366</b>	<b>140594</b>	<b>30122</b>	<b>3657511</b>	<b>20389</b>	<b>3178</b>

\* Random Breath Testing data by geographical region for 2014/15 has been sourced from the Intelligence Tasking Analysis System (I-TAS) on 30/07/2015 and is preliminary and subject to change. Region 'other' is inclusive of random breath tests undertaken by units that are central to a command (i.e. Not hosted in regions). For example units under Commander Road Policing Command (Roadside Drug Testing Unit, Road Policing Task Force and Brisbane Forensic Crash Unit) are included in region 'other'.

^ Note: Other RBT types include alcoholmeter reason codes RBT water, heavy vehicle and behaviour. Data on positive roadside tests was sourced from QPRIME. Data on number of roadside drug tests was sourced from ITAS RDT module and databases maintained by Statewide Drug Testing project. Data is preliminary and subject to change.

### Vehicle Impoundments – Number of Type 1 and Type 2 Vehicle Impoundments# – 2013/14 and 2014/15

Region	Number Vehicle Impoundments (Type 1)			Number Vehicle Impoundments (Type 2)		
	2013/14	2014/15	Percentage Change	2013/14	2014/15	Percentage Change**
Brisbane Region	181	214	18%	2273	2576	13%
Central Region	309	323	5%	2303	2658	15%
Northern Region	168	191	14%	1561	1886	21%
South Eastern Region	235	211	-10%	2536	2528	0%
Southern Region	223	231	4%	2740	3206	17%
<b>Queensland</b>	<b>1116</b>	<b>1170</b>	<b>5%</b>	<b>11418</b>	<b>12858</b>	<b>13%</b>

# Data has been sourced from QPRIME Zap Analysis. Data is accurate as at 12/07/2015. The totals in the regional data may not match the Queensland total due to incorrect data entry (e.g. There was no geographical boundary inputted resulting in an 'exception'). Vehicles impounded includes vehicles subject to immobilisation, impoundment or eligible for forfeiture. Data is counting vehicles impounded and not offences. Not every offence will result in an impoundment or immobilisation. Therefore the number of impoundments and immobilisations will be less than the number of offences.

\*\* Although offences per 1,000 vehicles or per hour have been rounded to the nearest whole number, the actual number was used to calculate the percentage change between the two periods. Therefore, although the change values are correct, they may not appear so, particularly where numbers are low.

## Traffic:

### Number of Police Pursuits Recorded in 2013/14 by Pursuit Policy Reason

Pursuit Policy Reason: Section 10.5.2 of the Traffic Manual (subsections)	Quantity	% of Total Pursuits
(i)	5	2%
(ii)	0	0%
(iii)	2	1%
(iv)	175	85%
(i), (ii), (iv)	1	0%
(i), (iv)	4	2%
(i), (iii), (iv)	0	0%
(iii), (iv)	0	0%
NPM	20	10%
<b>Total</b>	<b>207</b>	<b>100%</b>

### Number of Police Pursuits Recorded in 2014/15 by Pursuit Policy Reason

Pursuit Policy Reason: Section 10.5.2 of the Traffic Manual (subsections)^	Quantity	% of Total Pursuits
(i)	3	2%
(ii)	2	1%
(iii)	1	1%
(iv)	96	67%
(i), (ii), (iv)	0	0%
(i), (iv)	4	3%
(i), (iii), (iv)	1	1%
(iii), (iv)	1	1%
NPM	36	25%
<b>Total</b>	<b>144</b>	<b>100%</b>

**Caveat:** Data pertaining to reported pursuits has been extracted from the pursuit database, currently maintained by Road Policing Command. Pursuits are identified for inclusion in the database upon entry into the SEMS, and/or QPRIME, and/or upon identification by the SERP and/or upon identification of a pursuit after an audit of evade police offences by a professional practice manager. Data was extracted on 21 July 2015. Data is preliminary and subject to change.

#### Legend for Pursuit policy reason type

^ As per Traffic Manual 10.5.2 Justification for pursuit;

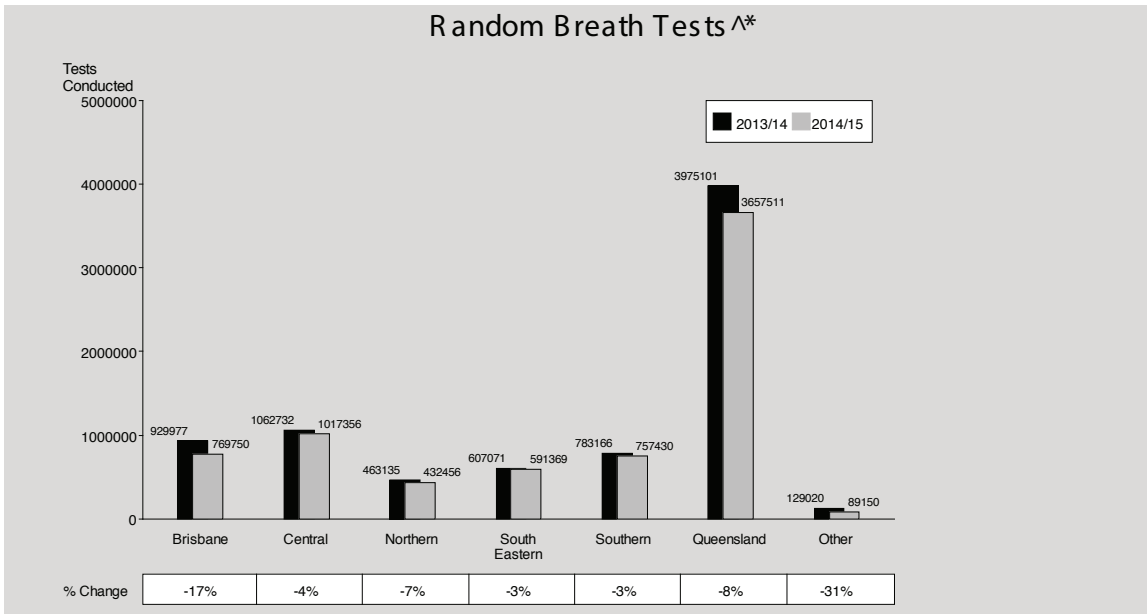
Pursuits are permitted only where officers have a reasonable belief that an occupant of the vehicle:

- (i) will create an imminent threat to life; or
  - (ii) has or may commit an act of unlawful homicide or attempt to murder; or
  - (iii) has issued threats to kill any person and has the apparent capacity to carry out the threat; or
  - (iv) has committed an indictable offence prior to an attempt by police to intercept the vehicle;
- AND
- (v) the imminent need to apprehend the person is considered justifiable given the risks of pursuing

Matters which officers are not permitted to pursue (NPM = Non-pursuable matters) include:

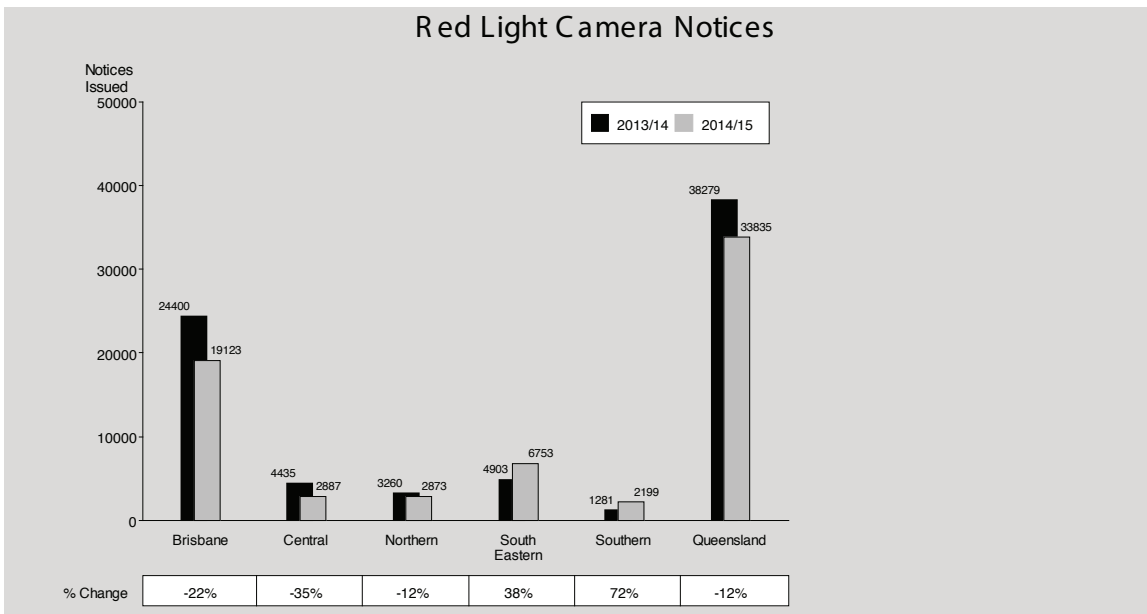
- licence, vehicle or street checks;
- routine traffic interceptions where no other offence exists apart from failing to stop as directed;
- random breath tests;
- all simple offences (including traffic offences and evasion offences); and
- indictable offences based on officer instinct alone or suspicion only (without supporting evidence).

# Traffic



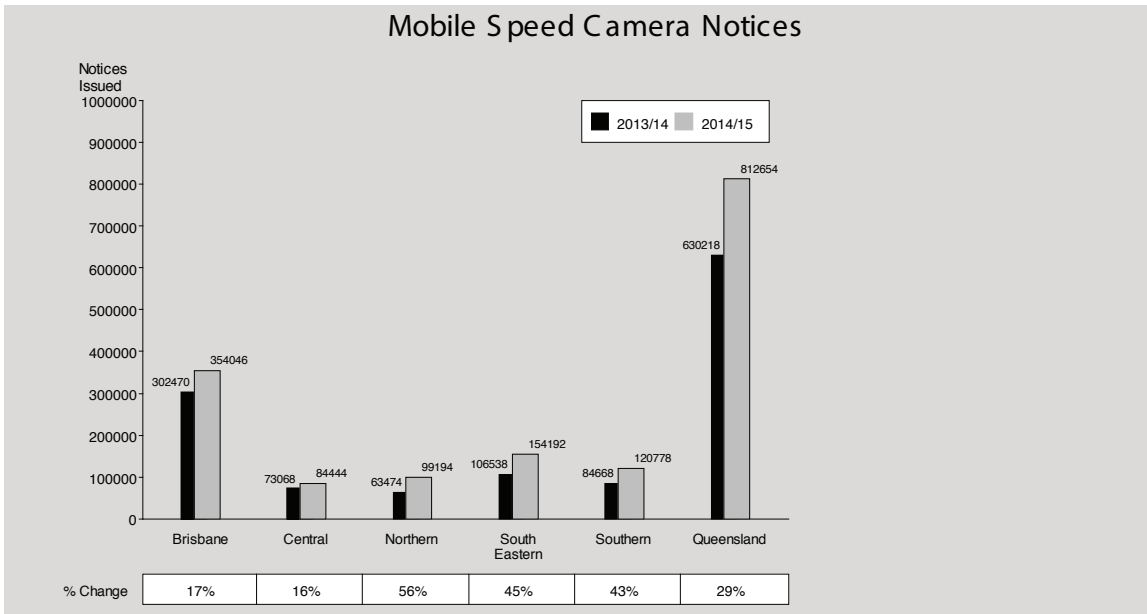
<sup>^</sup> The aggregate of region totals do not equate to the number of tests conducted state-wide.

\* Region 'other' is inclusive of random breath tests undertaken by units that are central to a command (i.e. Not hosted in regions). For example units under Commander Road Policing Command (Roadside Drug Testing Unit, Road Policing Task Force and Brisbane Forensic Crash Unit) are included in region 'other'.

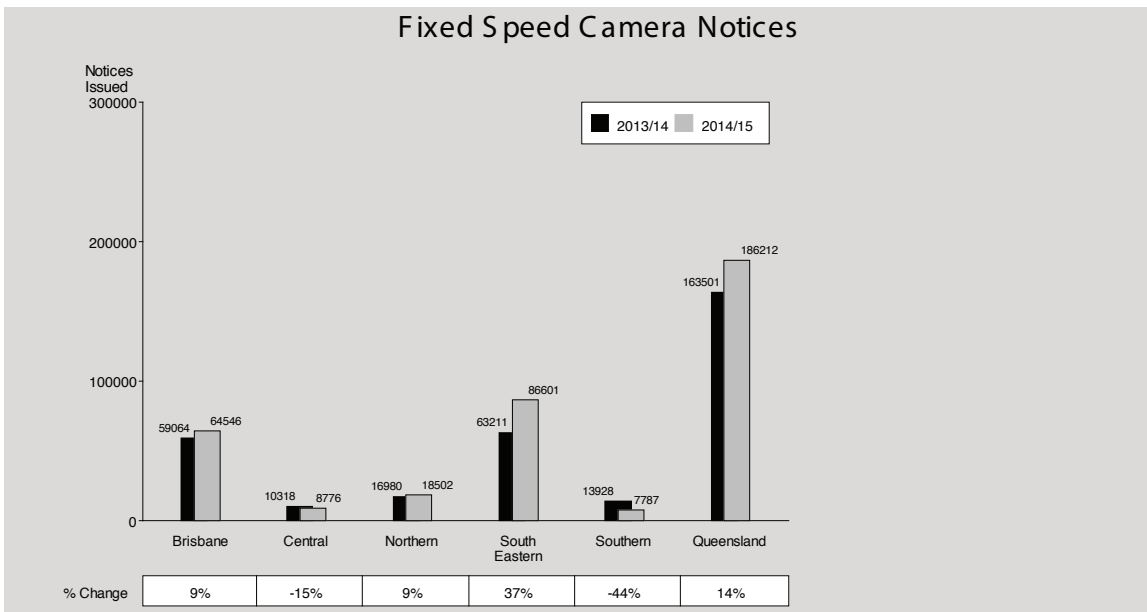


Brisbane Region recorded the highest number of red light camera offences in the State and Southern Region recorded the lowest despite recording the largest increase in offences. The largest decrease was recorded by Central Region.

# Traffic



Brisbane Region recorded the highest number of mobile speed camera offences in the State and Southern Region recorded the lowest. The greatest increase was recorded by South Eastern and overall Queensland recorded a 29% increase in these offences.



South Eastern Region recorded the highest number of fixed speed camera offences in the State as well as the greatest increase. Central Region recorded the lowest number of these offences and the largest decrease was recorded by Southern Region.